

# MarKiDini Cal – Border Small Blanket



Designed by:

Muis Creations

In Association with :

Kiki Dumoulin

Dini Bleijenberg

This week we are going to make the border. With a nice border you can personalize your blanket. You can use any normal crochet border if you like. You can also make a honey comb border, which I have used in my Stacking Whirls Blanket. You can find that pattern on Ravelry. <https://www.ravelry.com/patterns/library/stacking-whirls>

Or you can choose one of the borders I specifically designed for this blanket. There is a border with a Celtic Cable, a simple 2 stitch cable or a lovely heart pattern. It is up to you. Be careful when reading the patterns for each border. There is a chart for the sides and one for the top and bottom, they are divided over 3 pages each!!! The first chart is for the bottom and the top of the blanket and the next one is for the left and right sides of the blanket. Each border will have multiple pages included for design specific charts.

#### VIDEO LINKS:

Right Handed: <https://youtu.be/Wv-FIQSY5y0>

Left Handed: <https://youtu.be/58LyYi4oCYM>

#### ***The Border***

The border is made with mitered corners. It is a technique that I learned from the 10-stitch blanket which is on Ravelry. I use it to make nice looking corners. I also used the technique in my Stacking Whirls blanket, therefore I have already made a complete tutorial, and will use the Stacking Whirls tutorial, with its photos, here. The photos show a border with 11 stitches. Pick the border you like most and make the chain as long as needed.

***THE PATTERN ALREADY STARTS WHEN YOU ARE MAKING YOUR CORNERS!!!!***

Read carefully and use the chart from that point.

**NOTE: Joining of yarn should be done “behind” the corner stitches and all connections are in the back, similar to how we have worked the lines.**






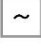






#### ***Work as follow***

- 1 Bottom
- 2 Right Side
- 3 Top
- 4 Left Side

Start at the corner left bottom of Block 1. Make your chain (see first part of your chart). Follow the instructions and chart.

**Explanation of the symbols for all Borders**

<b>Abbreviations</b>	
<b>TSS</b>	<b>Tun Simple Stitch</b>
<b>TPS</b>	<b>Tun Purl Stitch</b>
<b>TKS</b>	<b>Tun Knit Stitch</b>
<b>TDS</b>	<b>Tun Double Stitch</b>
<b>YO</b>	<b>Yarn Over</b>
<b>CH</b>	<b>Chain</b>
<b>TOG</b>	<b>Together</b>

	border / connection loop
	repeat rows
	TSS
	TPS
	TKS
	Return Stitch
	2TOG
	1 tks over 1 tps left
	1 tks over 1 tps right
	2 tks over 1 tps left
	2 tks over 1 tps right
	NO STITCH

## First Half Corner

Connect your yarn to one of the corners of the square of Week 1. Connection MUST be in either the lower right corner or the top left corner (I started with orange). **For MarKiDini, remember to start in the bottom left corner.**

Chain 11

### Row 1

Pick up 2 loops (3 loops on the hook) in the back bump

**Make return pass by pulling thru 2 loops at once! This is for all return passes DO NOT PULL THROUGH 1 LOOP**

### Row 2

- Pick up 3 loops (4 loops)
- first loop is in 2<sup>nd</sup> vertical bar,
- second loop is in the same chain as your second loop of Row 1
- third loop is in the next stitch of the chain
- Return pass (see Row 1)



### Row 3

pick up 4 TSS (5 loops)

### Row 4

pick up 5 TSS (6 loops)

### Row 5

pick up 6 TSS (7 loops)

### Row 6

pick up 7 TSS (8 loops)

### Row 7

pick up 8 (9 loops)

### Row 8

pick up 9 (10 loops)

### Row 9

pick up 10 (11 loops)

### Row 10

pick up 11 (12 loops)

### Row 11

pick up 12 and make the connection with the block in the corner stitch (13 loops)



Continue in this manner according to your selected chart.



## CORNERS 2, 3 and 4

### Part 1 of the Corner

Decrease left side in the return pass. Pull through 2 stitches at once. You will not crochet the last stitch of the next row



### Part 2 of the Corner - color 2

Increasing stitches

#### Row 1

- Forward Pass
- You have to pick up the first loop in the last vertical bar of Row 8.  
The 2<sup>nd</sup> stitch you have to pick up is the border stitch of Row 7 (3 loops)
- Return pass



#### Row 2

- Pick up 3 loops (4 loops)
- first one is in 2<sup>nd</sup> vertical bar,
- second one is in the same stitch as your second loop of row 1
- third one is the next border stitch
- Return pass



Continue in this manner according to your selected chart.



### Last Half Corner

We are going to decrease, but we also have to connect to the first half of the corner.

Forward pass

TSS and make the connection with the block in the corresponding row. Be careful to insert hook under BOTH LOOPS of the decrease (dc2tog) stitch when pulling up a loop in the next one.

*DECREASE LEFT SIDE IN THE RETURN PASS*

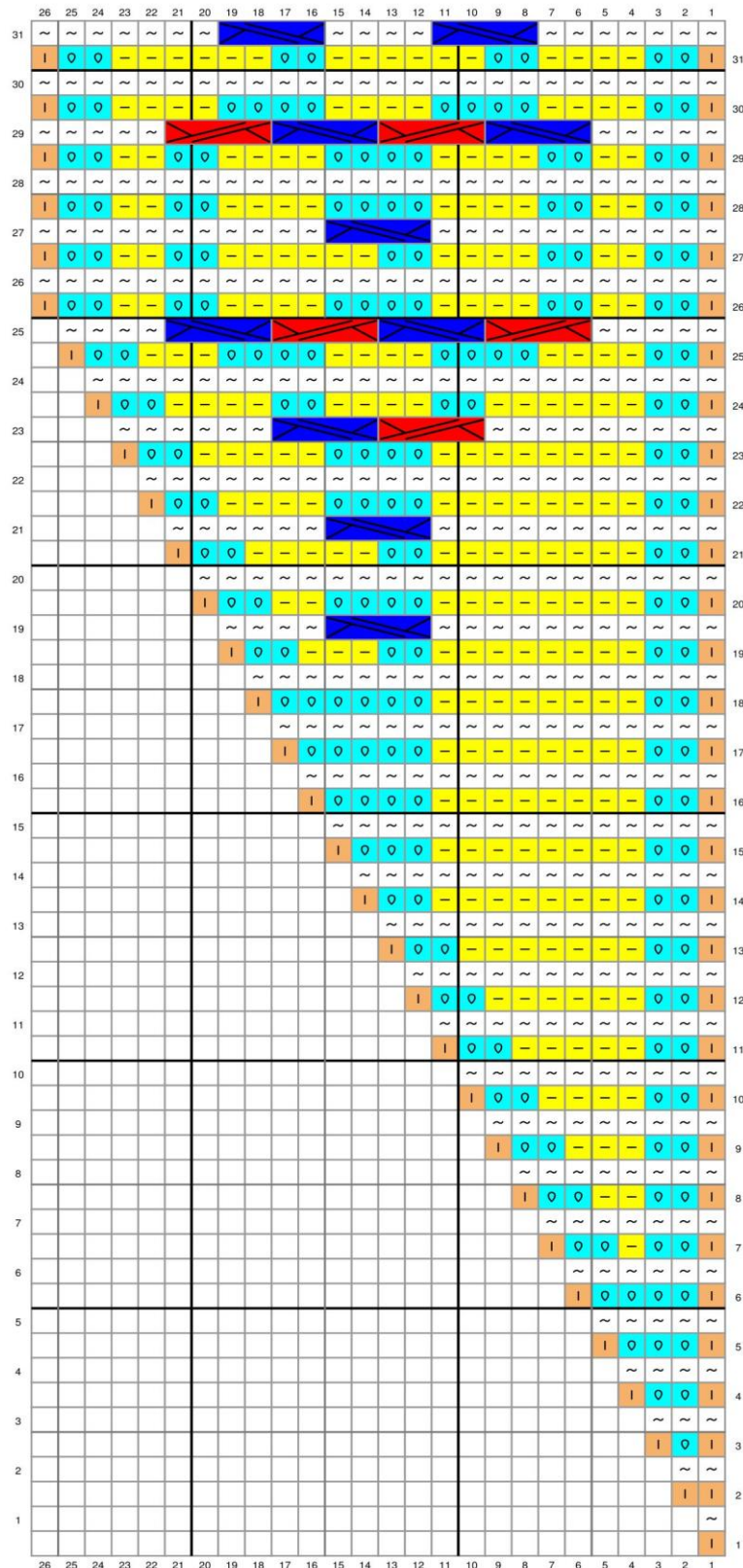
*FOR THE CONNECTION, INSERT YOUR HOOK, PULL UP A LOOP AND PULL THAT LOOP THROUGH 2 LOOPS ON THE HOOK.*



## *Celtic Cable*





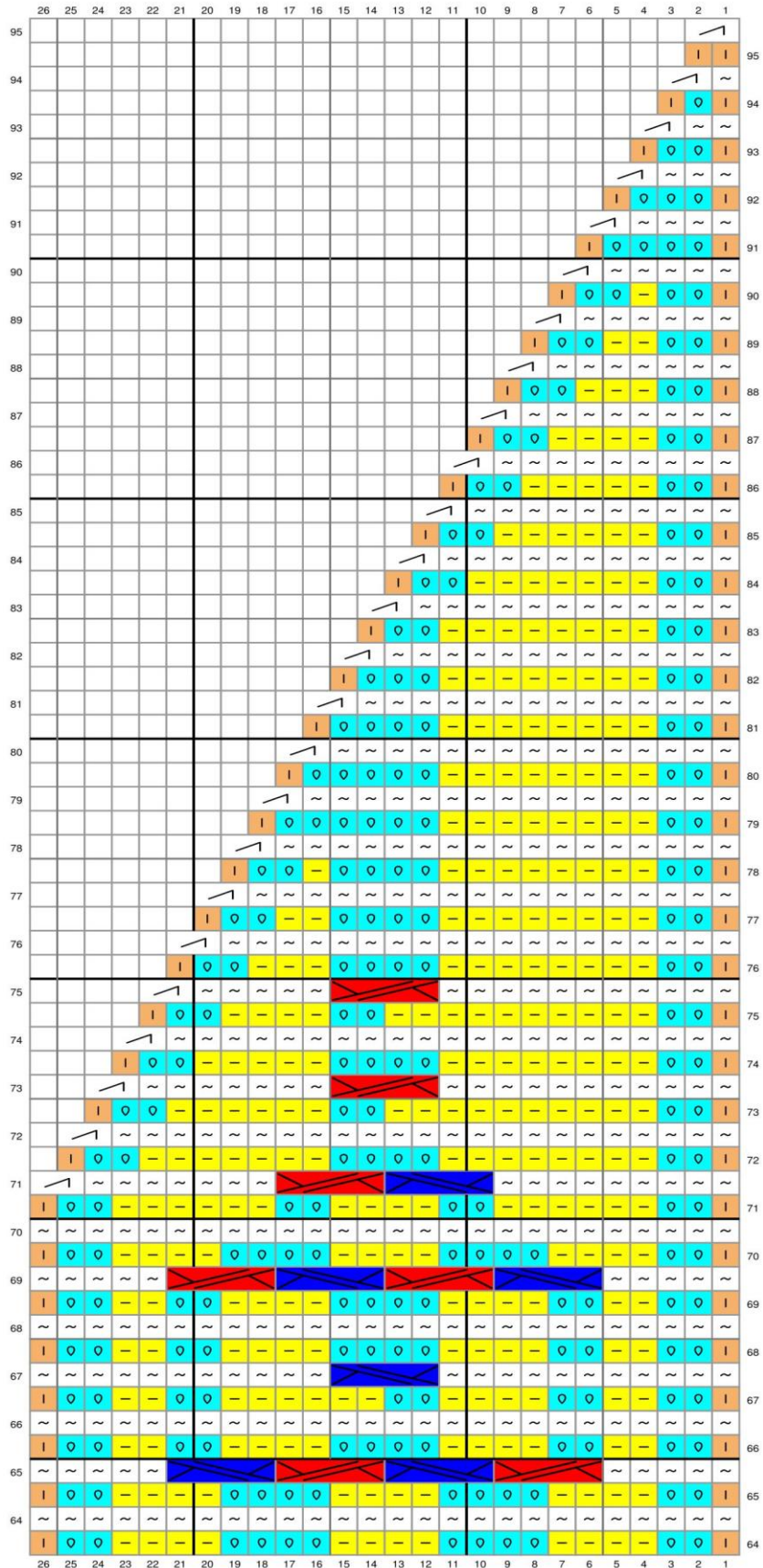
**START WITH: CHAIN 24**

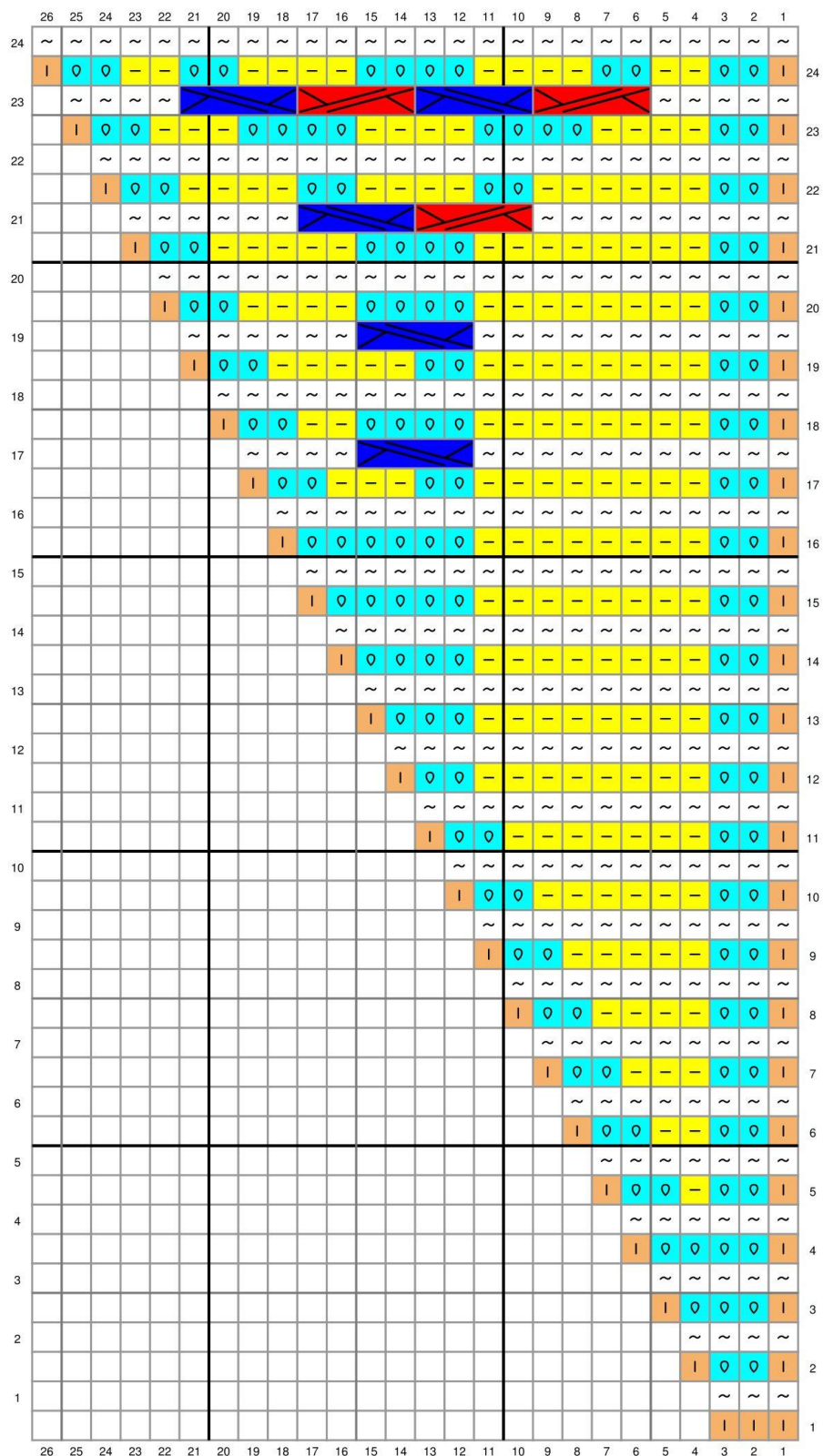
Repeat Rows 37 through 60!!!

*REPEAT THE PATTERN 6 TIMES AND CONTINUE WITH ROW 61*

	26	25	24	23	22	21	20	19	18	17	16	15	14	13	12	11	10	9	8	7	6	5	4	3	2	1	
63	~	~	~	~	~	~	~	~	~	~	~	~	~	~	~	~	~	~	~	~	~	~	~	~	~	~	63
62	I	Q	Q	~	~	~	~	~	~	~	~	~	~	~	~	~	~	~	~	~	~	~	~	~	~	I	62
61	~	~	~	~	~	~	~	~	~	~	~	~	~	~	~	~	~	~	~	~	~	~	~	~	~	~	61
60	I	Q	Q	~	~	~	~	~	~	~	~	~	~	~	~	~	~	~	~	~	~	~	~	~	~	I	60
59	~	~	~	~	~	~	~	~	~	~	~	~	~	~	~	~	~	~	~	~	~	~	~	~	~	~	59
58	I	Q	Q	~	~	~	~	~	~	~	~	~	~	~	~	~	~	~	~	~	~	~	~	~	~	I	58
57	~	~	~	~	~	~	~	~	~	~	~	~	~	~	~	~	~	~	~	~	~	~	~	~	~	~	57
56	I	Q	Q	~	~	~	~	~	~	~	~	~	~	~	~	~	~	~	~	~	~	~	~	~	~	I	56
55	~	~	~	~	~	~	~	~	~	~	~	~	~	~	~	~	~	~	~	~	~	~	~	~	~	~	55
54	I	Q	Q	~	~	~	~	~	~	~	~	~	~	~	~	~	~	~	~	~	~	~	~	~	~	I	54
53	~	~	~	~	~	~	~	~	~	~	~	~	~	~	~	~	~	~	~	~	~	~	~	~	~	~	53
52	I	Q	Q	~	~	~	~	~	~	~	~	~	~	~	~	~	~	~	~	~	~	~	~	~	~	I	52
51	~	~	~	~	~	~	~	~	~	~	~	~	~	~	~	~	~	~	~	~	~	~	~	~	~	~	51
50	I	Q	Q	~	~	~	~	~	~	~	~	~	~	~	~	~	~	~	~	~	~	~	~	~	~	I	50
49	~	~	~	~	~	~	~	~	~	~	~	~	~	~	~	~	~	~	~	~	~	~	~	~	~	~	49
48	I	Q	Q	~	~	~	~	~	~	~	~	~	~	~	~	~	~	~	~	~	~	~	~	~	~	I	48
47	~	~	~	~	~	~	~	~	~	~	~	~	~	~	~	~	~	~	~	~	~	~	~	~	~	~	47
46	I	Q	Q	~	~	~	~	~	~	~	~	~	~	~	~	~	~	~	~	~	~	~	~	~	~	I	46
45	~	~	~	~	~	~	~	~	~	~	~	~	~	~	~	~	~	~	~	~	~	~	~	~	~	~	45
44	I	Q	Q	~	~	~	~	~	~	~	~	~	~	~	~	~	~	~	~	~	~	~	~	~	~	I	44
43	~	~	~	~	~	~	~	~	~	~	~	~	~	~	~	~	~	~	~	~	~	~	~	~	~	~	43
42	I	Q	Q	~	~	~	~	~	~	~	~	~	~	~	~	~	~	~	~	~	~	~	~	~	~	I	42
41	~	~	~	~	~	~	~	~	~	~	~	~	~	~	~	~	~	~	~	~	~	~	~	~	~	~	41
40	I	Q	Q	~	~	~	~	~	~	~	~	~	~	~	~	~	~	~	~	~	~	~	~	~	~	I	40
39	~	~	~	~	~	~	~	~	~	~	~	~	~	~	~	~	~	~	~	~	~	~	~	~	~	~	39
38	I	Q	Q	~	~	~	~	~	~	~	~	~	~	~	~	~	~	~	~	~	~	~	~	~	~	I	38
37	~	~	~	~	~	~	~	~	~	~	~	~	~	~	~	~	~	~	~	~	~	~	~	~	~	~	37
36	I	Q	Q	~	~	~	~	~	~	~	~	~	~	~	~	~	~	~	~	~	~	~	~	~	~	I	36
35	~	~	~	~	~	~	~	~	~	~	~	~	~	~	~	~	~	~	~	~	~	~	~	~	~	~	35
34	I	Q	Q	~	~	~	~	~	~	~	~	~	~	~	~	~	~	~	~	~	~	~	~	~	~	I	34
33	~	~	~	~	~	~	~	~	~	~	~	~	~	~	~	~	~	~	~	~	~	~	~	~	~	~	33
32	I	Q	Q	~	~	~	~	~	~	~	~	~	~	~	~	~	~	~	~	~	~	~	~	~	~	I	32



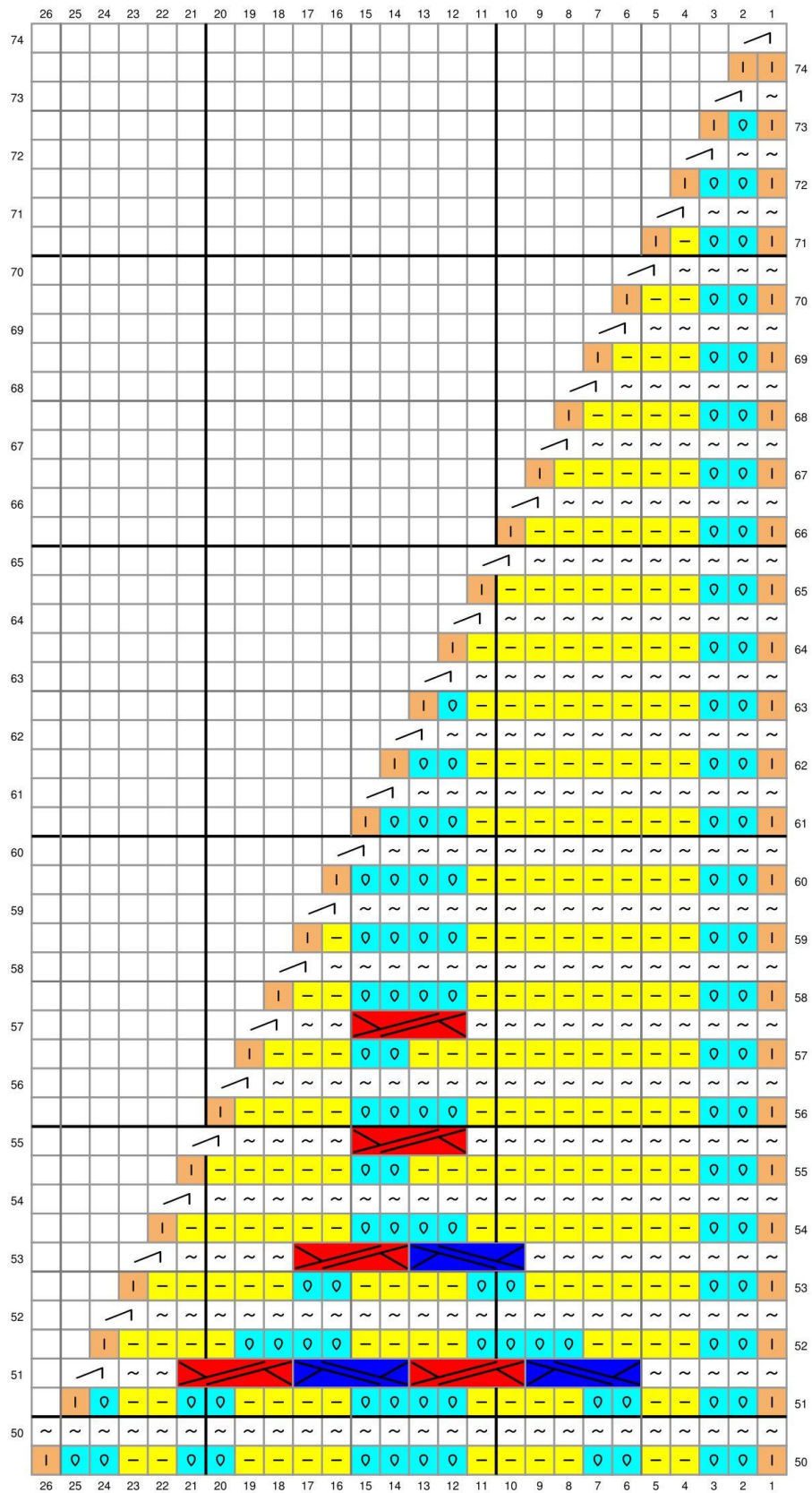




Repeat Rows 26 through 49!!! *REPEAT THE PATTERN 6 TIMES AND CONTINUE WITH ROW 50*

	26	25	24	23	22	21	20	19	18	17	16	15	14	13	12	11	10	9	8	7	6	5	4	3	2	1		
49	~	~	~	~	~	~	~	~	~	~	~					~	~	~	~	~	~	~	~	~	~	~	~	49
48		0	0	-	-	0	0	-	-	-	-	-	-	0	0	-	-	-	-	0	0	-	-	0	0		48	
47	~	~	~	~	~																	~	~	~	~	~	~	47
46		0	0	-	-	-	0	0	0	0	-	-	-	-	0	0	0	0	-	-	-	-	-	0	0		46	
45		0	0	-	-	-	-	0	0	0	0	-	-	-	-	0	0	0	0	-	-	-	-	0	0		45	
44	~	~	~	~	~	~					~	~	~	~	~					~	~	~	~	~	~	~	44	
43		0	0	-	-	0	0	-	-	-	-	0	0	0	0	-	-	-	-	0	0	-	-	0	0		43	
42		0	0	-	-	0	0	-	-	-	-	0	0	0	0	-	-	-	-	0	0	-	-	0	0		42	
41		0	0	-	-	0	0	-	-	-	-	-	-	0	0	-	-	-	-	0	0	-	-	0	0		41	
40		0	0	-	-	0	0	-	-	-	-	0	0	0	0	-	-	-	-	0	0	-	-	0	0		40	
39		0	0	-	-	0	0	-	-	-	0	0	0	0	-	-	-	-	0	0	-	-	0	0		39		
38		0	0	-	-	0	0	-	-	0	0	-	-	-	-	0	0	-	-	0	0	-	-	0	0		38	
37		0	0	-	-	0	0	-	-	0	0	-	-	-	-	0	0	-	-	0	0	-	-	0	0		37	
36		0	0	-	-	0	0	-	-	0	0	-	-	-	-	0	0	-	-	0	0	-	-	0	0		36	
35		0	0	-	-	0	0	-	-	-	-	0	0	0	0	-	-	-	-	0	0	-	-	0	0		35	
34		0	0	-	-	0	0	-	-	-	-	0	0	0	0	-	-	-	-	0	0	-	-	0	0		34	
33		0	0	-	-	0	0	-	-	-	-	0	0	0	0	-	-	-	-	0	0	-	-	0	0		33	
32		0	0	-	-	0	0	-	-	-	-	0	0	0	0	-	-	-	-	0	0	-	-	0	0		32	
31		0	0	-	-	0	0	-	-	0	0	0	0	-	-	-	0	0	0	0	-	-	-	0	0		31	
30		0	0	-	-	0	0	-	-	0	0	0	0	-	-	-	0	0	0	0	-	-	-	0	0		30	
29		0	0	-	-	0	0	-	-	0	0	-	-	-	-	0	0	-	-	-	-	-	-	0	0		29	
28		0	0	-	-	0	0	-	-	0	0	0	0	-	-	0	0	0	0	-	-	-	-	0	0		28	
27		0	0	-	-	0	0	-	-	-	-	0	0	0	0	-	-	-	-	0	0	-	-	0	0		27	
26		0	0	-	-	0	0	-	-	-	-	0	0	0	0	-	-	-	-	0	0	-	-	0	0		26	
25		0	0	-	-	0	0	-	-	-	-	-	0	0	0	-	-	-	-	0	0	-	-	0	0		25	



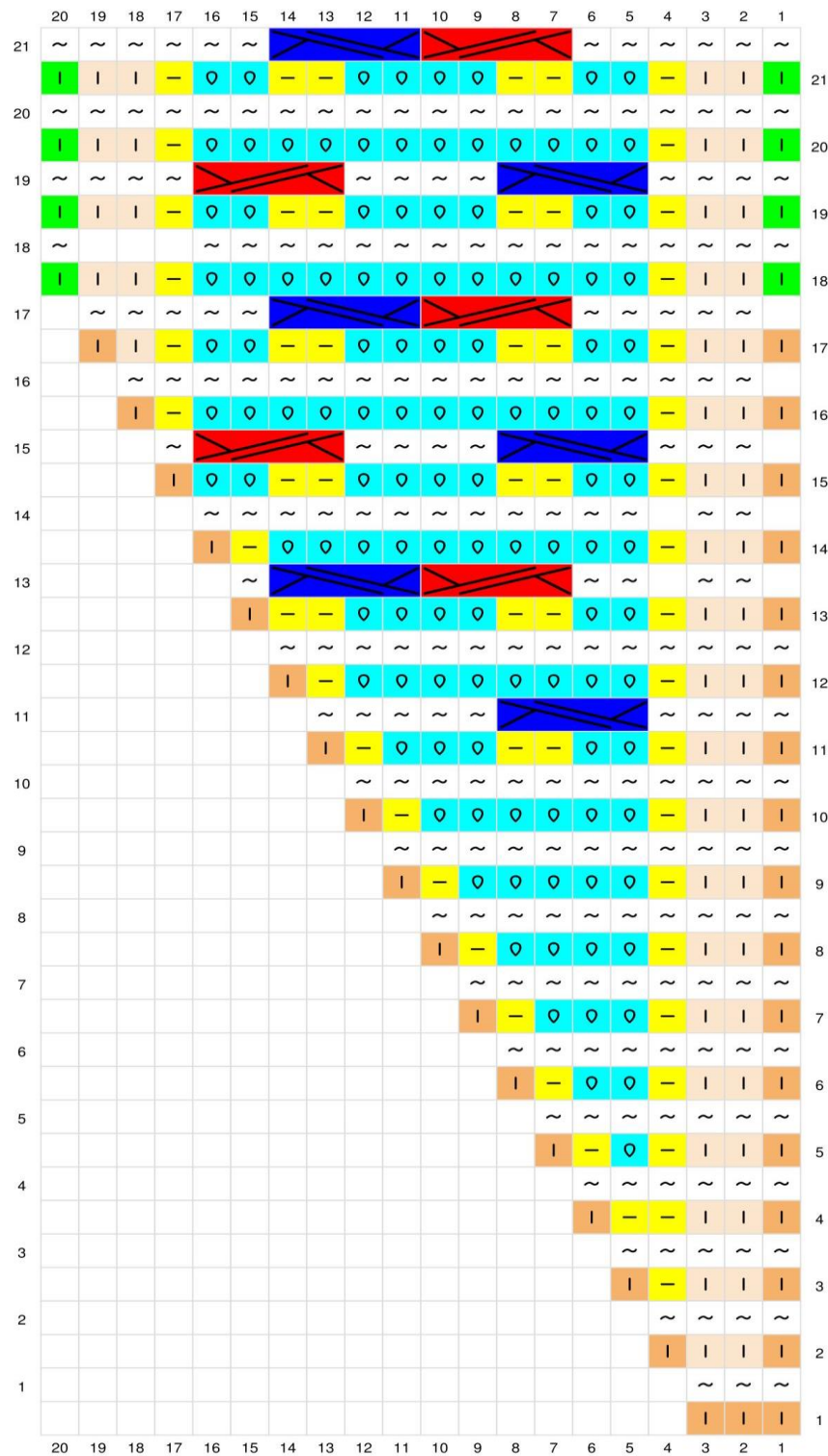


## *Simple Cable*

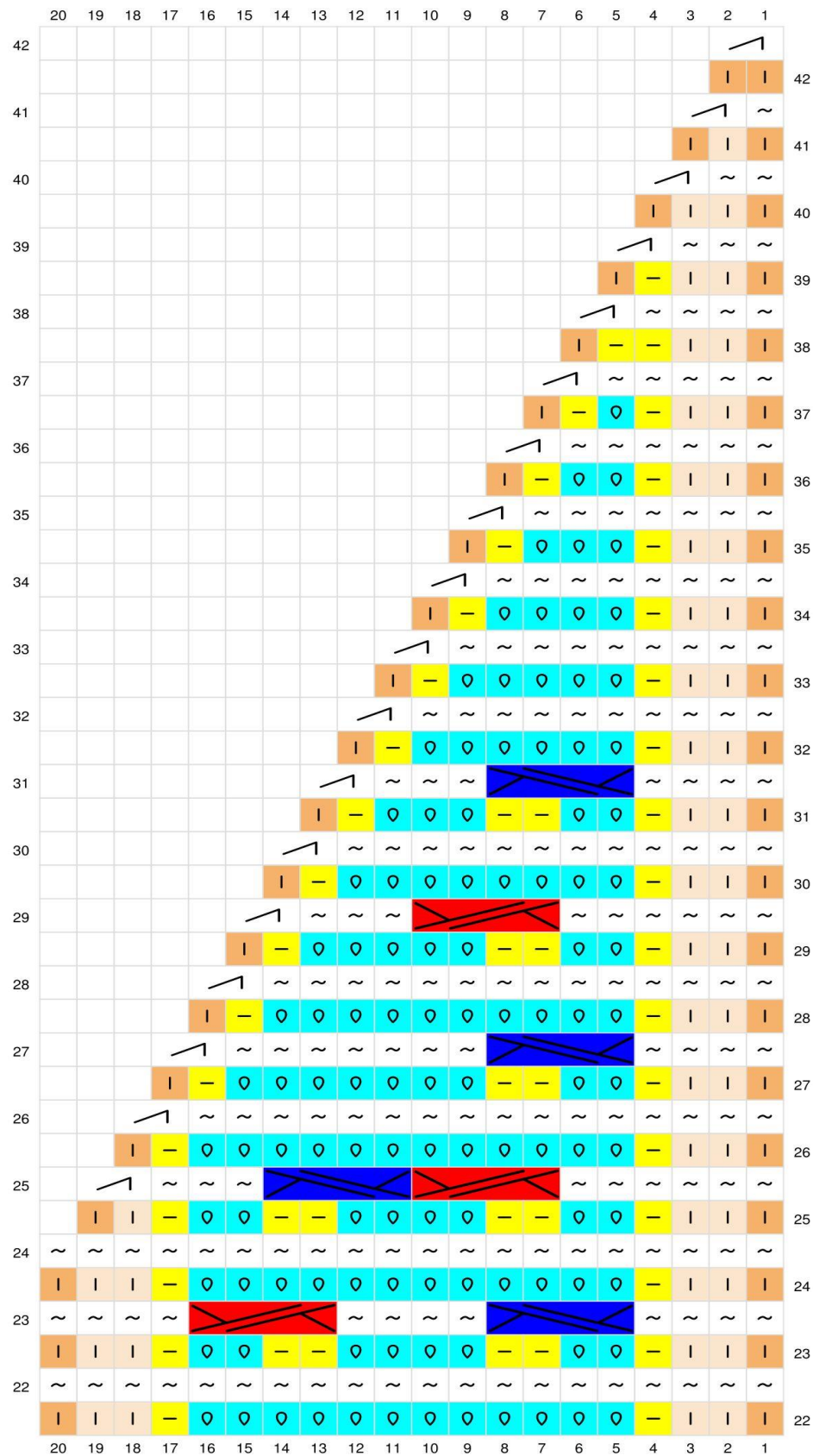


This Border has 2 charts, each divided over 2 pages

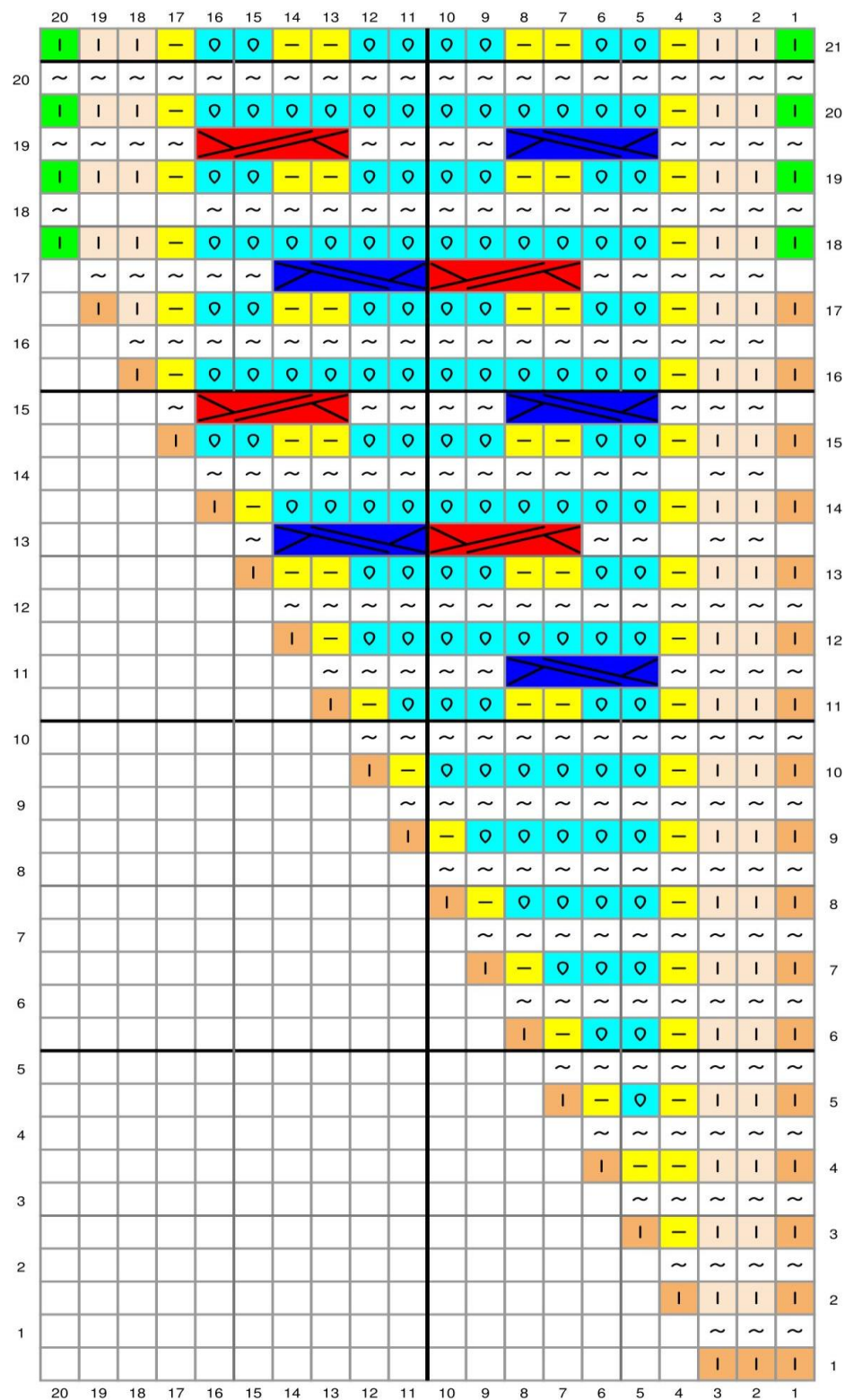
Chain 18

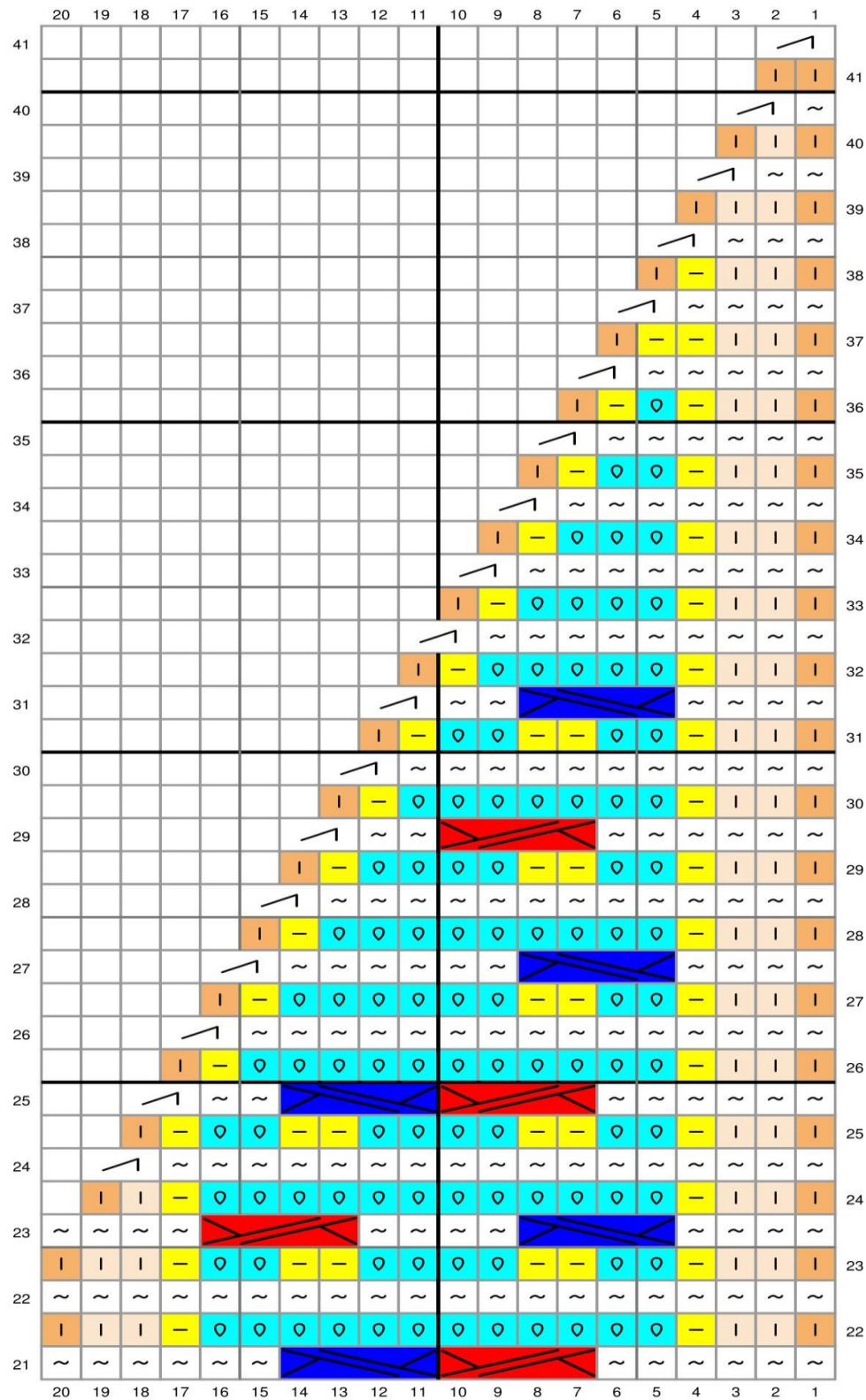
Repeat Row 18 through 21 **REPEAT THE PATTERN 41 TIMES AND CONTINUE WITH ROW 22**





Repeat row 18 through 21

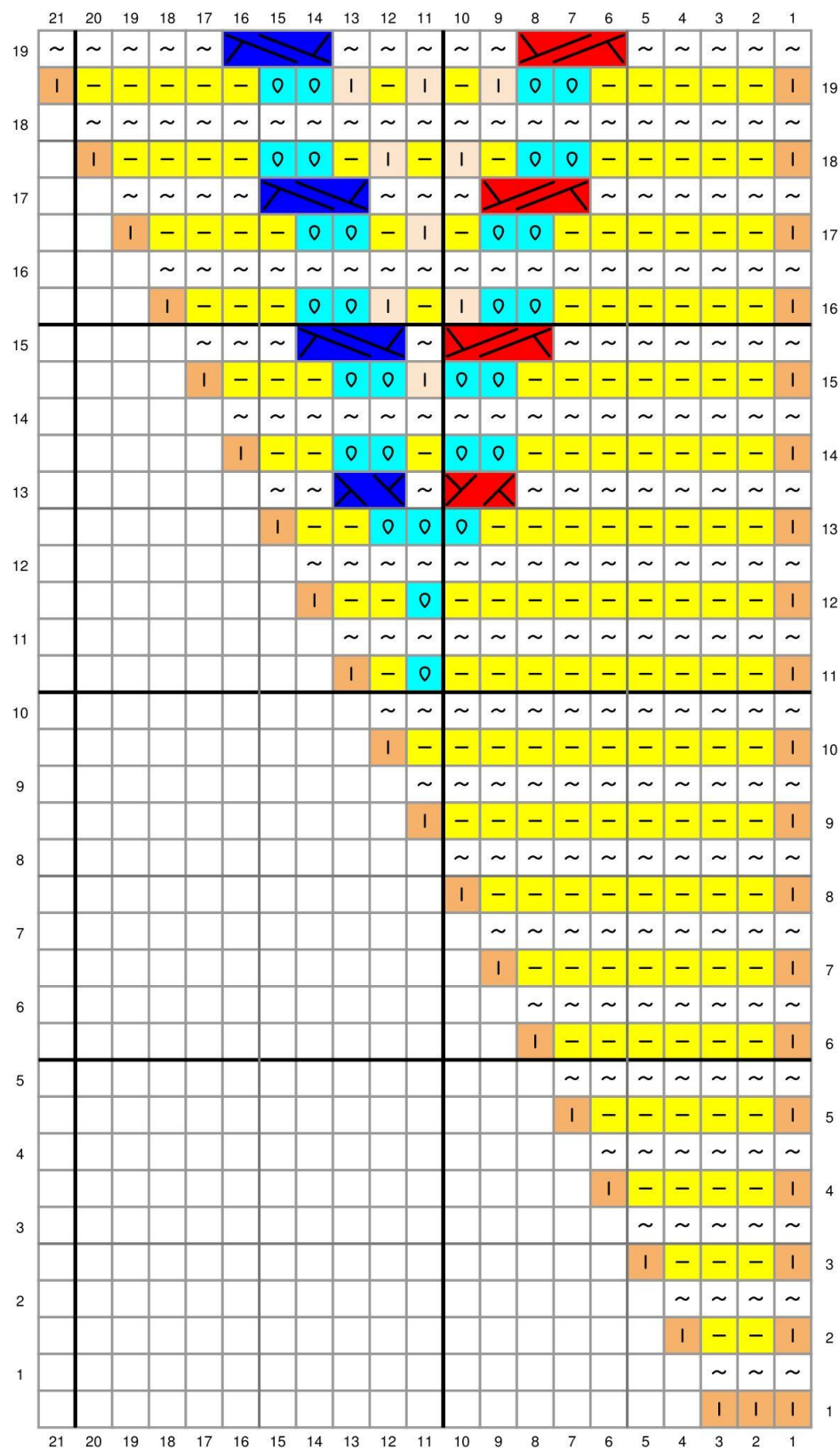
REPEAT THE PATTERN 36 TIMES AND CONTINUE WITH ROW 22






# *Hearts*

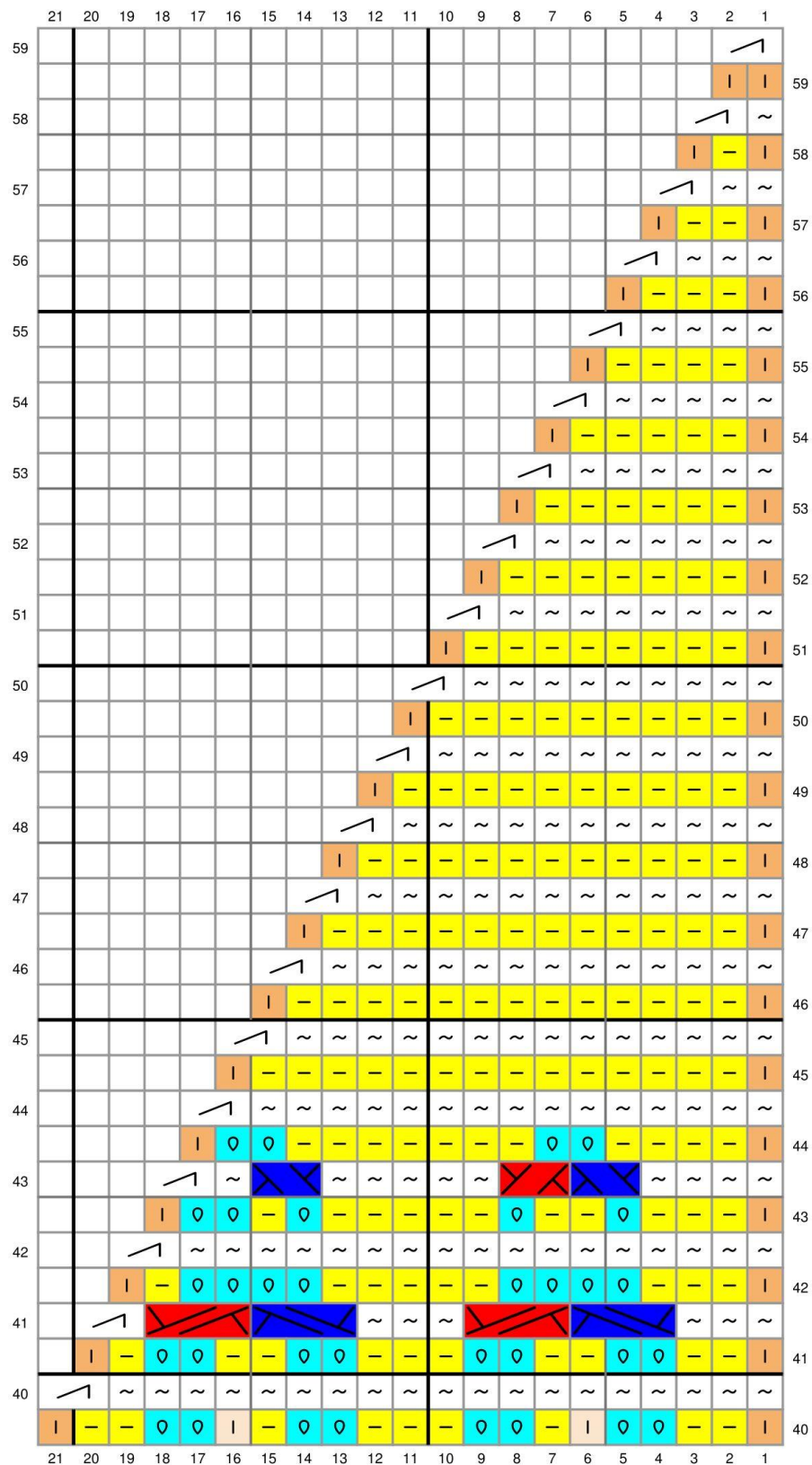




Repeat Row 20 through 31. *REPEAT THE PATTERN 13 TIMES AND CONTINUE WITH ROW 32*

	21	20	19	18	17	16	15	14	13	12	11	10	9	8	7	6	5	4	3	2	1	
39	~	~	~	~	~	~	~	~	~	~	~	~	~	~	~	~	~	~	~	~	~	
		-	0	0	-	-		-	0	0	-	0	0	-		-	-	0	0	-		39
38	~	~	~	~	~	~	~	~	~	~	~	~	~	~	~	~	~	~	~	~	~	
		-	0	0	-		-		0	0	-	0	0		-		-	0	0	-		38
37	~	~	~	~	~	~	~	~	~	~	~	~	~	~	~	~	~	~	~	~	~	
		-	-	0	0	-		-	-	0	0	0	-	-		-	0	0	-	-		37
36	~	~	~	~	~	~	~	~	~	~	~	~	~	~	~	~	~	~	~	~	~	
		-	-	0	0		-		-		0		-		-		0	0	-	-		36
35	~	~	~	~	~	~	~	~	~	~	~	~	~	~	~	~	~	~	~	~	~	
		-	-	-	0	0		-		-		-		-		0	0	-	-	-		35
34	~	~	~	~	~	~	~	~	~	~	~	~	~	~	~	~	~	~	~	~	~	
		-	-	-	0	0	-		-		-		-		-		0	0	-	-		34
33	~	~	~	~	~	~	~	~	~	~	~	~	~	~	~	~	~	~	~	~	~	
		-	-	-	-	0	0	-		-		-		-		0	0	-	-	-		33
32	~	~	~	~	~	~	~	~	~	~	~	~	~	~	~	~	~	~	~	~	~	
		-	-	-	-	0	0		-		-		-		0	0	-	-	-	-		32
31	~	~	~	~	~	~	~	~	~	~	~	~	~	~	~	~	~	~	~	~	~	
		-	-	-	-	-	0	0		-		-		0	0	-	-	-	-	-		31
30	~	~	~	~	~	~	~	~	~	~	~	~	~	~	~	~	~	~	~	~	~	
		-	-	-	0	0	0	0	-		-		-	0	0	0	0	-	-	-		30
29	~	~	~	~	~	~	~	~	~	~	~	~	~	~	~	~	~	~	~	~	~	
		-	-	0	0	-	-	0	0	-		-	0	0	-	-	0	0	-	-		29
28	~	~	~	~	~	~	~	~	~	~	~	~	~	~	~	~	~	~	~	~	~	
		-	-	0	0		-	0	0		-		0	0	-		0	0	-	-		28
27	~	~	~	~	~	~	~	~	~	~	~	~	~	~	~	~	~	~	~	~	~	
		-	0	0	-	-		-	0	0		0	0	-		-	-	0	0	-		27
26	~	~	~	~	~	~	~	~	~	~	~	~	~	~	~	~	~	~	~	~	~	
		-	0	0	-		-		0	0	-	0	0		-		-	0	0	-		26
25	~	~	~	~	~	~	~	~	~	~	~	~	~	~	~	~	~	~	~	~	~	
		-	-	0	0	-		-	-	0	0	0	-	-		-	0	0	-	-		25
24	~	~	~	~	~	~	~	~	~	~	~	~	~	~	~	~	~	~	~	~	~	
		-	-	0	0		-		-		0		-		-		0	0	-	-		24
23	~	~	~	~	~	~	~	~	~	~	~	~	~	~	~	~	~	~	~	~	~	
		-	-	-	0	0		-		-	0	-		-		0	0	-	-	-		23
22	~	~	~	~	~	~	~	~	~	~	~	~	~	~	~	~	~	~	~	~	~	
		-	-	-	0	0	-		-		-		-		-		0	0	-	-		22
21	~	~	~	~	~	~	~	~	~	~	~	~	~	~	~	~	~	~	~	~	~	
		-	-	-	-	0	0	-		-		-		-		0	0	-	-	-		21
20	~	~	~	~	~	~	~	~	~	~	~	~	~	~	~	~	~	~	~	~	~	
		-	-	-	-	0	0		-		-		-		0	0	-	-	-	-		20
	21	20	19	18	17	16	15	14	13	12	11	10	9	8	7	6	5	4	3	2	1	





*Left/Right Side*  
*Marjolein*

*Hearts*

*design:*

	21	20	19	18	17	16	15	14	13	12	11	10	9	8	7	6	5	4	3	2	1	
21	~	~	~	~	~	~	~	~	~	~	~	~	~	~	~	~	~	~	~	~	~	21
20	~	~	~	~	~	~	~	~	~	~	~	~	~	~	~	~	~	~	~	~	~	20
19	~	~	~	~	~	~	~	~	~	~	~	~	~	~	~	~	~	~	~	~	~	19
18	~	~	~	~	~	~	~	~	~	~	~	~	~	~	~	~	~	~	~	~	~	18
17	~	~	~	~	~	~	~	~	~	~	~	~	~	~	~	~	~	~	~	~	~	17
16	~	~	~	~	~	~	~	~	~	~	~	~	~	~	~	~	~	~	~	~	~	16
15	~	~	~	~	~	~	~	~	~	~	~	~	~	~	~	~	~	~	~	~	~	15
14	~	~	~	~	~	~	~	~	~	~	~	~	~	~	~	~	~	~	~	~	~	14
13	~	~	~	~	~	~	~	~	~	~	~	~	~	~	~	~	~	~	~	~	~	13
12	~	~	~	~	~	~	~	~	~	~	~	~	~	~	~	~	~	~	~	~	~	12
11	~	~	~	~	~	~	~	~	~	~	~	~	~	~	~	~	~	~	~	~	~	11
10	~	~	~	~	~	~	~	~	~	~	~	~	~	~	~	~	~	~	~	~	~	10
9	~	~	~	~	~	~	~	~	~	~	~	~	~	~	~	~	~	~	~	~	~	9
8	~	~	~	~	~	~	~	~	~	~	~	~	~	~	~	~	~	~	~	~	~	8
7	~	~	~	~	~	~	~	~	~	~	~	~	~	~	~	~	~	~	~	~	~	7
6	~	~	~	~	~	~	~	~	~	~	~	~	~	~	~	~	~	~	~	~	~	6
5	~	~	~	~	~	~	~	~	~	~	~	~	~	~	~	~	~	~	~	~	~	5
4	~	~	~	~	~	~	~	~	~	~	~	~	~	~	~	~	~	~	~	~	~	4
3	~	~	~	~	~	~	~	~	~	~	~	~	~	~	~	~	~	~	~	~	~	3
2	~	~	~	~	~	~	~	~	~	~	~	~	~	~	~	~	~	~	~	~	~	2
1	~	~	~	~	~	~	~	~	~	~	~	~	~	~	~	~	~	~	~	~	~	1

Repeat Row 22 through 33. ***REPEAT THE PATTERN 12 TIMES AND CONTINUE WITH ROW 34***



	21	20	19	18	17	16	15	14	13	12	11	10	9	8	7	6	5	4	3	2	1		
43		-	-	0	0	-	-	0	0	-	-	-	0	0	-	-	0	0	-	-		43	
42	~	~	~	~	~	~	~	~	~	~	~	~	~	~	~	~	~	~	~	~	~	42	
42		-	-	0	0		-	0	0	-	-	-	0	0	-		0	0	-	-		42	
41	~	~				~	~			~				~	~				~	~	~	41	
41		-	0	0	-	-		-	0	0	-	0	0	-		-	-	0	0	-	-		41
40	~	~	~	~	~	~	~	~	~	~	~	~	~	~	~	~	~	~	~	~	~	40	
40		-	0	0	-		-		0	0	-	0	0		-		-	0	0	-	-		40
39	~	~				~	~	~			~			~	~	~				~	~	~	39
39		-	-	0	0	-		-	-	0	0	0	-	-		-	0	0	-	-		39	
38	~	~	~	~	~	~	~	~	~	~	~	~	~	~	~	~	~	~	~	~	~	38	
38		-	-	0	0		-		-		0		-		-		0	0	-	-		38	
37	~	~	~				~	~	~	~	~	~	~	~	~				~	~	~	37	
37		-	-	-	0	0		-		-	0	-		-		0	0	-	-	-		37	
36	~	~	~	~	~	~	~	~	~	~	~	~	~	~	~	~	~	~	~	~	~	36	
36		-	-	-	0	0	-		-		-		-		-	0	0	-	-	-		36	
35	~	~	~	~				~	~	~	~	~	~	~				~	~	~	~	35	
35		-	-	-	-	0	0	-		-		-		-	0	0	-	-	-	-		35	
34	~	~	~	~	~	~	~	~	~	~	~	~	~	~	~	~	~	~	~	~	~	34	
34		-	-	-	-	0	0		-		-		-		0	0	-	-	-	-		34	
33	~	~	~	~				~	~	~	~	~	~	~				~	~	~	~	33	
33		-	-	-	-	-	0	0		-		-		0	0	-	-	-	-	-		33	
32	~	~	~	~	~	~	~	~	~	~	~	~	~	~	~	~	~	~	~	~	~	32	
32		-	-	-	0	0	0	0	-		-		-	0	0	0	0	-	-	-		32	
31	~	~	~							~	~	~							~	~	~	31	
31		-	-	0	0	-	-	0	0	-	-		-	0	0	-	-	0	0	-	-		31
30	~	~	~	~	~	~	~	~	~	~	~	~	~	~	~	~	~	~	~	~	~	30	
30		-	-	0	0	-	-	0	0		-		0	0	-	-	0	0	-	-		30	
29	~	~				~	~				~				~	~				~	~	~	29
29		-	0	0	-	-		-	0	0		0	0	-		-	-	0	0	-	-		29
28	~	~	~	~	~	~	~	~	~	~	~	~	~	~	~	~	~	~	~	~	~	28	
28		-	0	0	-		-		0	0	-	0	0		-		-	0	0	-	-		28
27	~	~				~	~	~			~			~	~	~				~	~	~	27
27		-	-	0	0	-		-	-	0	0	0	-	-		-	0	0	-	-		27	
26	~	~	~	~	~	~	~	~	~	~	~	~	~	~	~	~	~	~	~	~	~	26	
26		-	-	0	0		-		-		0		-		-		0	0	-	-		26	
25	~	~	~				~	~	~	~	~	~	~	~	~				~	~	~	25	
25		-	-	-	0	0		-		-	0	-		-		0	0	-	-	-		25	
24	~	~	~	~	~	~	~	~	~	~	~	~	~	~	~	~	~	~	~	~	~	24	
24		-	-	-	0	0	-		-		-		-		-	0	0	-	-	-		24	
23	~	~	~	~				~	~	~	~	~	~	~	~				~	~	~	23	
23		-	-	-	-	0	0	-		-		-		-	0	0	-	-	-	-		23	
22	~	~	~	~	~	~	~	~	~	~	~	~	~	~	~	~	~	~	~	~	~	22	
22		-	-	-	-	0	0		-		-		-		0	0	-	-	-	-		22	
	21	20	19	18	17	16	15	14	13	12	11	10	9	8	7	6	5	4	3	2	1		

